



iroda

Gas Powered Heating Tools PRO-70

SOLDERPRO

PROFESSIONAL QUALITY



25-80
W



Important:
Read these instructions for use carefully so as to familiarize yourself with the appliance before connecting it to its gas cartridge. Keep these instructions for future reference.



Model: PRO-70
Category: Direct pressure
Butane Gas Powered Heating Tool
Manufacturer: Pro-Iroda Industries, Inc.
Address: No. 32nd Road, Taichung Industrial Park,
Taichung 40608, Taiwan.
TEL: 886-4-2359-9599

This appliance may be used with any cartridges marked "Butane-Propane Mixture" compatible with EN 417.

place you purchased.

Do not modify the appliance or try to fix it. Send the appliance back to a

leaking a flame, use safety water.

If well-ventilated flame free location where the leak may be detected and stopped.

If there is a leak on your appliance (leak of gas), take it outside immediately into a

minimum distance 1 km from adjacent surfaces (wall, ceiling).

The appliance shall be used away from flammable materials and information on

not intended to operate resting on surface.

For appliances not fitted with a flame supervision device!

and to avoid the dangerous building up of un-burnt gases

requirements.

For outdoor use or use in a well-ventilated location in accordance with national

not operate properly.

Do not use the appliance if it is damaged or worn seals.

cause tear-up at the tip exhaust slots.

Butane-Propane mix or other fuel could create much higher temperatures and

support for leaks.

If your torch malfunctions do not try to repair. Contact your dealer or online

DO NOT replace cap without switching unit off and ensuring tip has cooled.

Always be sure unit is cool before storing.

DO NOT leave unit knurled when operating or hot.

Do not touch the heated tip of the unit.

Use Safety Glasses.

Be extremely careful as torch flame is almost invisible in daylight outdoors.

Be extremely careful as torch flame is almost invisible in daylight outdoors.

Store in dry, locked cabinet out of reach of children.

KEEP AWAY FROM CHILDREN. Vectors should be kept away from work area.

Keep work area clean. Cluttered areas and benches invite injuries.

combustible materials.

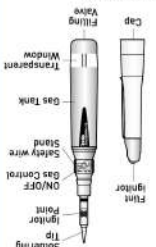
DO NOT refill, ignite or use near open flame, heater, furnace or

exposure to the sun.

DO NOT puncture or inhale.

DO NOT expose to heat above -50°C (-50°F) and avoid prolonged

unit uses flammable gas (butane) under pressure - use with care.



| SPECIFICATIONS | |
|---------------------|--|
| Dimensions | W/C 8.7 inches (220 mm) W/S 7.6 inches (193 mm) H 1 inch (25 mm) |
| Weight (Empty Tank) | 6612g |
| Fuel | Butane |
| Flame Temperature | 2400° F/1300° C |
| Operating Time | Approx. 220 Minutes (butane) |
| Nominal Rate | 9.45 G/H and 0.13 Kw (Hs) |
| Injector Size | 0.08 mm |
| Destination | GB/EU |
| Country | |

iroda

Gas Powered Heating Tools PRO-70



iroda INSTRUCTION MANUAL

Gas Powered Heating Tools PRO-70

REFILLING

- Use only high-quality butane gas.
 - Refill in a well-ventilated area away from any ignition source and other people.
- Hold butane canister upside down when filling (Fig. 1)
 - Firmly press canister nozzle into Gas Filling Valve.
 - Release canister when gas starts to overflow. (Gas overflow during refilling is normal and does not indicate a leak)
 - Wait for a few minutes before use.



Fig.1

IGNITION

- Push the ON/OFF lever upward and to the right, and set to mid position. (Fig.2)
- Ignite the gas stream with the Flint igniter located on the Torch Cap. (Fig. 3a / Fig. 3b) You can also use a regular lighter. The tip will flame for a few seconds and then the catalyst will change to an orange glow.



Fig.3a

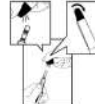


Fig.3b



Fig.2

IGNITION WARNINGS

- Do not touch Tip, Tip Housing or Knurled Nut while igniting. (Fig. 4)
- Do not ignite torch when Tip Assembly is not screwed on. (Fig. 5)



Fig.4



Fig.5

TEMPERATURE ADJUSTMENT

- The tip temperature can be adjusted by turning the Gas Control Lever left or right. (Fig. 6)
- Set to mid-position when soldering or brazing.
- Excessive gas flow, flare-up or catalyst pulsing red may occur when the Gas Control Lever is set too high.



Mid-Position

CHANGING TIPS

- Be sure the tip has cooled before removal.
- Unscrew tip with a counterclockwise motion. (Fig. 7) Pliers may be required to lightly grasp the tip in order to loosen it.
- Replace with desired tip. Be careful not to overtighten as this could damage the thread in the cap.



WARNING: The catalyst inside the soldering tip is very delicate and will not sustain mechanical abuse without serious damage.

CLEANING

- Use only mild soap and a damp cloth to clean the housings of the tool. Many household cleaners contain chemicals which could seriously damage the plastic. Also do not use gasoline, turpentine, lacquer or paint thinner, dry cleaning fluids or similar products. Never let any liquid get inside the tool; never immerse any part of the tool into a liquid.

TROUBLE SHOOTING

- To reduce the risk of personal injury, property damage, or damage to your SOLDERPRO 70, do not attempt to repair the unit body.

| PROBLEM | PROBABLE CAUSE | HOW TO CORRECT |
|-------------------------------|--|--|
| Does not ignite | a. Empty Gas Tank b. Too high or low fuel pressure c. Pushing on/off ignition switch too fast. | a. Refill with butane fuel. b. Adjust control lever to a higher or lower position. c. Re-read IGNITION steps |
| Low gas pressure or low flame | a. Cold fuel b. Low fuel | a. Hold body in hands to allow unit to warm up. b. Refuel. |
| Tip does not heat up | a. Used-up catalyst b. Insufficient fuel pressure | a. Replace with new tip. b. Adjust control lever to a higher position. |

SPECIAL WARNING

- This product, when used for soldering and similar applications, produces chemicals known to the State of California to cause cancer and birth defects or other reproductive harm.
- Department of Transportation Hazardous Materials Regulations forbid the carriage of butane or other flammable gas products on passenger aircraft. Do not pack this item or any other flammable gas item, in any checked or carry-on baggage.

